

MSK-1 - Drywall Applications

Sound
Transducer for
Sound Masking
Applications

SolidDrive
INVISIBLE SOUND SOLUTIONS



Specifications: MSK-1 - Drywall Applications **Mounting hardware included**

Nominal Impedance	8 ohm
Frequency Response (± 3 dB)	80 Hz - 10 kHz
Frequency Response (± 10 dB)	70 Hz - 15 kHz
Max. Program Power	50W
Max. Continuous Power RMS	30W
Max. Power SPL @ 1 M	86 dB (Drywall)
Coverage Angle (-6 dB @ 10 kHz)	120
Coverage Angle (-6 dB @ 2 kHz)	120
Enclosure - material	Titanium anodized aluminum
Grille - material	N/A
Grille - part	N/A
Height (SM = Height)	51.3 mm / 2.02"
Diameter (SM = Width)	58.4 mm / 2.30"
Weight	0.5 kg / 1.2 lb
Shipping Weight	0.9 kg / 2.0 lb

MSK-1 - Drywall Applications

Sound
Transducer for
Sound Masking
Applications

SolidDrive
INVISIBLE SOUND SOLUTIONS

Description

The MSK-1 by SolidDrive is an economical hidden planar-source sound transducer designed for sound masking in drywall applications. Featuring a rugged aluminum enclosure with neodymium magnets, the MSK-1 uses technology similar to our patented SD1 transducers to transfer acoustic energy to the substrate. The result is extremely wide and even audio coverage and acoustical uniformity in the listening space. The MSK-1 must be installed using the SD1 mounting bracket, sold separately. Different bracket widths are available to accommodate in-wall stud spacing.

Patented SolidDrive Technologies

SolidDrive and MSE Audio Group constantly develop new technologies that enhance audio product performance. SolidDrive innovations are protected by

multiple U.S. and international patents, which explicitly cover SolidDrive dispersion, enclosure and dome technologies. MSE Audio Group actively defends its patents in order to protect SolidDrive resellers and end users.

Technical Data and Specification Tools

Technical Data

SolidDrive strives to provide complete and effective technical information and data to dealers, engineers and designers. All data are available from SoundTube Entertainment or at www.soundtube.com. Technical data and downloads include: EASE™ data - 3-D polar plots. EASE™ Address - 2-D modeling for distributed systems Autodesk® Revit® software Tech Sheets - Technical information and architectural specs for system engineers SoundTubeSPEC™ - Proprietary speaker placement software

Data Acquisition and Verification

All data for SolidDrive speakers are independently collected from and verified by NWAALabs (www.nwaalabs.com) using their proprietary MACH testing system. All data are collected and analyzed according to ASTM, ISO and AES standards using EASRA, TEF and MLSSA. Full balloon data including both phase and magnitude are compiled into a variety of formats including EASE 4.x, GLL and CLF.

Architectural Specifications

No specifications currently.

SolidDrive

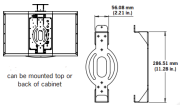
8005 W. 110th St. / Suite 208
Overland Park, KS 66210
Phone 913.663.5600
Fax
Toll Free 855.663.5600
<https://soliddrive.mseaudio.com>
All SolidDrive products come with a 5-year limited warranty.

MSK-1 - Drywall Applications

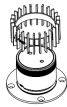
Sound
Transducer for
Sound Masking
Applications

SolidDrive
INVISIBLE SOUND SOLUTIONS

Optional Accessories

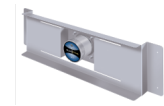


Wall Mount Bracket



Heat Sink Fins

Drywall EQ



SD1 Mounting Bracket

Glass EQ

Wood EQ